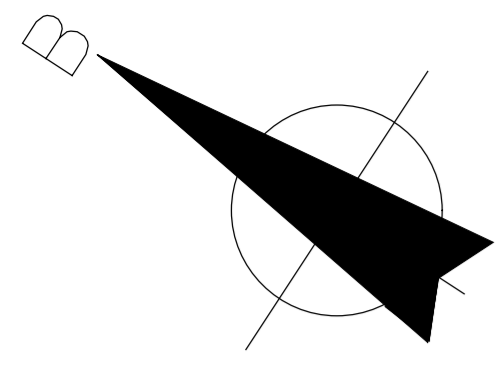


ΛΕΩΦΟΡΟΣ ΓΡ. ΛΑΜΠΡΑΚΗ



ΒΓ= 26.98μ.

T2

ΑΒ= 6.19μ.
391.73
ΕΑ= 26.95μ.
ΠΡΑΣΙΑ = 6.00μ.

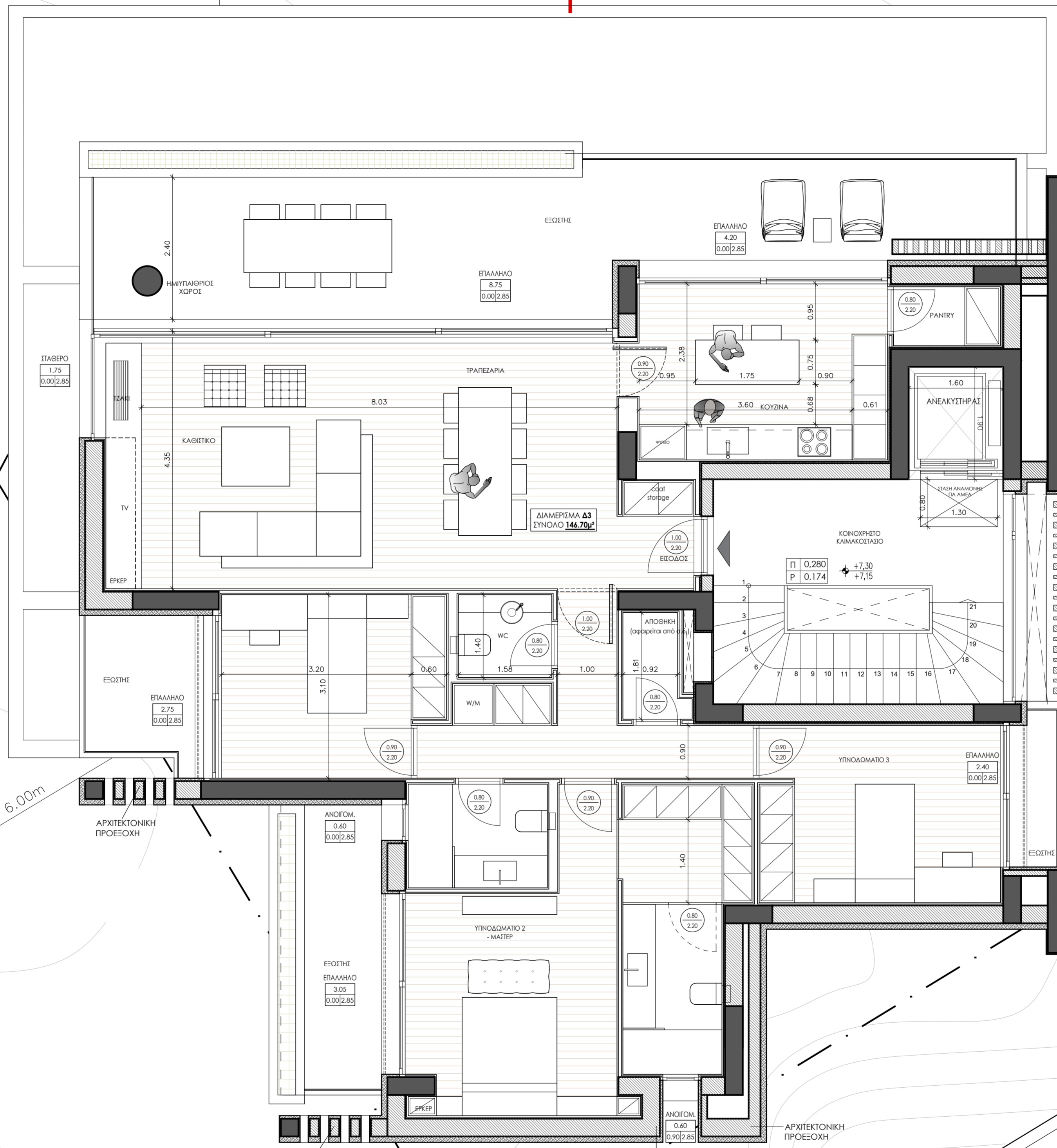
Γ

ΓΔ= 18.78μ.

T1

T3

ΟΔΟΣ ΑΘΗΝΑΣ



δ = 2.995m

04

T1

T3

392.62

T2

Ε

392.40
392.80
393.20
393.60
394.00
ΔΕ= 18.82μ.

03

392.04